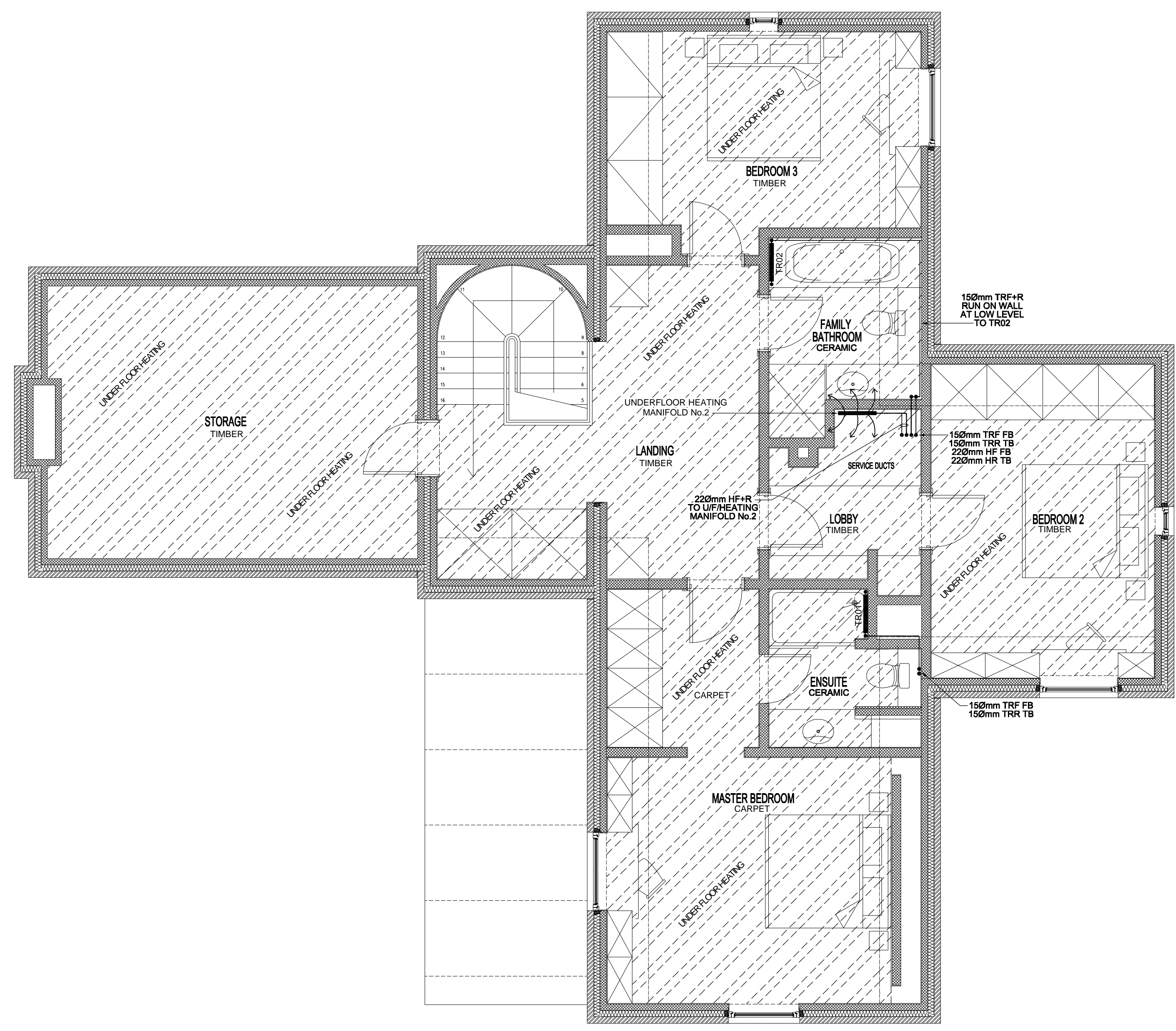


**GENERAL NOTES**

THIS DRAWING IS THE COPYRIGHT OF BLAIR THOMPSON BUILDING SERVICES CONSULTING ENGINEERS AND CANNOT BE PRINTED OR REPRODUCED WITHOUT PRIOR PERMISSION.  
 THIS DRAWING HAS BEEN BASED ON SURVEY INFORMATION PROVIDED BY OTHERS. ALL DIMENSIONS AND SETTING OUT MUST BE VERIFIED ON SITE BEFORE COMMENCEMENT OF THE WORK AND ANY DISCREPANCIES NOTIFIED TO THE CONSULTING ENGINEER.  
 DO NOT SCALE FROM THIS DRAWING.  
 ALL DIMENSIONS ARE IN MILLIMETRES UNLESS STATED OTHERWISE.

**LEGEND**

- UFHF+R — UNDER FLOOR HEATING FLOW AND RETURN
- TRF+R — TOWEL RAIL FLOW AND RETURN
- TR1 — TOWEL RAIL IDENTIFICATION
- FA — FROM ABOVE
- TA — TO ABOVE
- FB — FROM BELOW
- TB — TO BELOW
- — PIPES RISE AND FALL
- — PIPE JUNCTIONS



**FIRST FLOOR PLAN**

REV	DATE	DESCRIPTION	Drawn
C	25.11.11	REVISED TO CHARLIE BLISS COMMENTS 21-11-2011	WSD
B	19.11.11	CONSTRUCTION ISSUE	WSD
A	21.06.11	TENDER ISSUE	WSD
-	24.05.11	PRELIMINARY ISSUE	WSD

DRG STATUS **CONSTRUCTION**

ARCHITECT  
**BB PARTNERSHIP LTD**  
 ARCHITECTS  
THE TRAVELLER - 17 READINGTON STREET - LONDON, N1 8DH

JOB TITLE  
**Ravens Cottage**

DRG TITLE  
**HEATING AND GAS SERVICES  
 FIRST FLOOR**

**BLAIR THOMPSON**  
 Building Services Consulting Engineers  
 7 Port House, Plantation Wharf, London, SW11 3TY  
 TEL: 020 7352 2536 FAX: 020 7223 1393  
 EMAIL: info@blairthompson.co.uk

JOB NO	DRG NO	REV	SCALE
<b>511</b>	<b>102</b>	<b>C</b>	1:50@A1
			DATE
			WSD 06.04.11